

MASSACHUSETTS DEPARTMENT OF TRANSPORTATION  
HIGHWAY DIVISION

PLAN AND PROFILE OF  
PLEASANT STREET  
BRIDGE NO. D-02-008

IN THE TOWN OF  
DIGHTON  
BRISTOL COUNTY  
PRELIMINARY RIGHT OF WAY PLANS

FEDERAL AID PROJECT NO. ----

PLEASANT STREET			
STATE	FED. AID PROJ. NO.	SHEET NO.	TOTAL SHEETS
MA	----	1	9
PROJECT FILE NO.		613636	

TITLE SHEET & INDEX

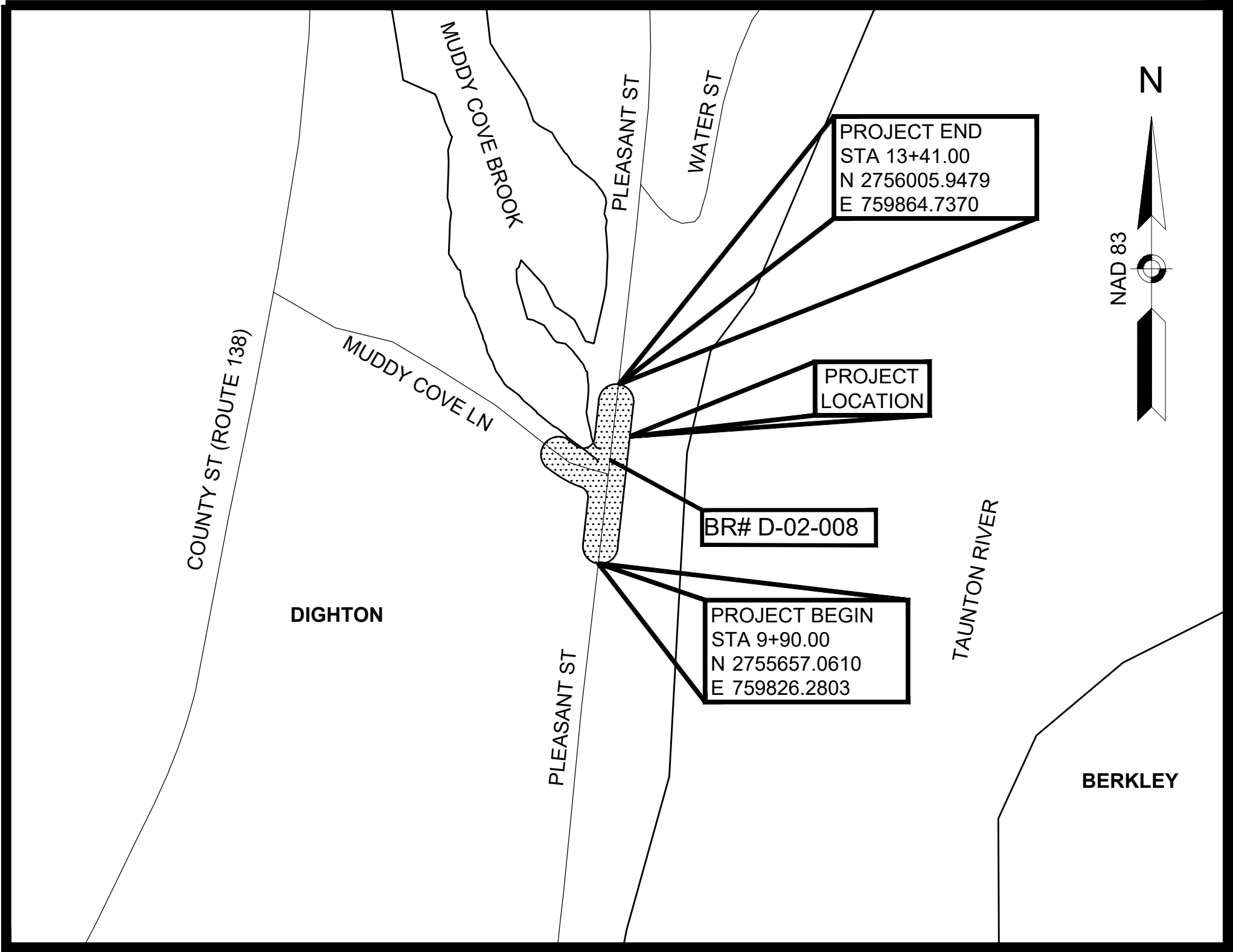
THESE PLANS ARE SUPPLEMENTED BY THE LATEST EDITIONS OF THE FOLLOWING PUBLICATIONS, AS IDENTIFIED IN THE CONTRACT SPECIAL PROVISIONS: THE MASSDOT CONSTRUCTION STANDARD DETAILS, THE MASSDOT STANDARD DRAWINGS FOR SIGNS AND SUPPORTS, THE MASSDOT STANDARD DRAWINGS FOR TRAFFIC SIGNALS AND HIGHWAY LIGHTING, THE MASSDOT OVERHEAD SIGNAL STRUCTURE AND FOUNDATION STANDARD DRAWINGS, THE MASSDOT TRAFFIC MANAGEMENT PLANS AND DETAIL DRAWINGS, AND THE ANSI AMERICAN STANDARD FOR NURSERY STOCK.

INDEX

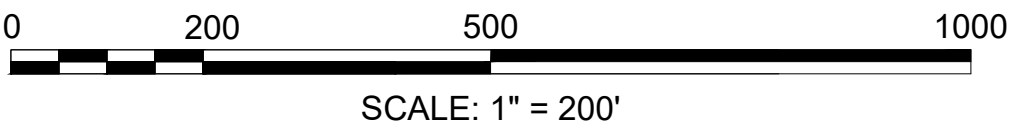
SHEET NO.	DESCRIPTION
1	TITLE SHEET & INDEX
2	LEGEND, ABBREVIATIONS AND PROJECT DESCRIPTION
3-4	TYPICAL SECTIONS
5	CRITICAL PROFILE
6	PARCEL SUMMARY SHEET
7	LOCATION PLAN
8	PROPERTY PLAN
9	DETOUR PLAN

BASEPLAN NOTES

- THE SURVEY BASEPLAN WAS PREPARED BY CHAPPELL ENGINEERING ASSOCIATES, LLC IN APRIL 2022.
- THE MOST RECENT SITE VISIT WAS COMPLETED IN APRIL 2025 TO VERIFY THAT THE EXISTING CONDITIONS SHOWN ON THE PLAN ARE THE CURRENT CONDITIONS IN THE FIELD.
- THE PROPERTY LINES SHOWN ON THE PLAN WERE COMPILED FROM PLANS AND DEEDS AND CERTIFIED BY WILLIAM TIRRELL P.L.S., A PLS IN DIRECT CHARGE AND SUPERVISION OF THE SURVEY BASEPLAN.
- LAYOUT LINES ARE UNAMBIGUOUSLY RETRACEABLE AND DEPICTED ACCURATELY ON THE RIGHT OF WAY PLANS BY AN ON-THE-GROUND SURVEY PERFORMED IN ACCORDANCE WITH 250 CMR 6.01 AND 6.02.
- THE OWNERS HAVE BEEN CHECKED AND UPDATED PER THE REGISTRY OF DEEDS AS OF APRIL 2025.
- THE PREQUALIFIED SURVEYOR UNDER THE S3 CATEGORY IS PARTICIPATING IN THE DEVELOPMENT OF THE ROW PLANS. WILLIAM TIRRELL OF CHAPPELL ENGINEERING ASSOCIATES, LLC HAS VERIFIED HIGHWAY LAYOUT BASELINES AND SIDELINES, VERIFIED MUNICIPAL LAYOUTS, VERIFIED THAT ABUTTERS PROPERTY LINES ARE CREATED BASED ON RECORD DEEDS AND PLANS, VERIFIED CURRENT ABUTTERS OWNERSHIP INFORMATION, VERIFIED EXISTING PERMANENT EASEMENTS, AND VERIFIED ANY OTHER ELEMENTS IN THE SURVEY BASEPLAN THAT AFFECTS DISPOSITIONS AND LAND ACQUISITIONS.




LOCUS MAP



LENGTH OF PROJECT = 350 FEET = 0.066 MILES



William Tirrell  
4/22/2025

4-25-2025	25% DESIGN	0
DATE	DESCRIPTION	REV #
<b>ROW PLANS PREPARED BY:</b>   www.BETA-inc.com  BETA GROUP, INC. 701 GEORGE WASHINGTON HWY LINCOLN, RI 02865		
<b>RECOMMENDED FOR APPROVAL</b>		
CHIEF ENGINEER		DATE

GENERAL SYMBOLS

EXISTING	PROPOSED	DESCRIPTION
		JERSEY BARRIER
		CATCH BASIN
		CATCH BASIN CURB INLET
		FLAG POLE
		GAS PUMP
		MAIL BOX
		POST SQUARE
		POST CIRCULAR
		WELL
		ELECTRIC HANDHOLE
		FENCE GATE POST
		GAS GATE
		BORING HOLE
		MONITORING WELL
		TEST PIT
		HYDRANT
		LIGHT POLE
		COUNTY BOUND
		GPS POINT
		CABLE MANHOLE
		DRAINAGE MANHOLE
		ELECTRIC MANHOLE
		GAS MANHOLE
		MISC MANHOLE
		SEWER MANHOLE
		TELEPHONE MANHOLE
		WATER MANHOLE
		MASSACHUSETTS HIGHWAY BOUND
		MONUMENT
		STONE BOUND
		TOWN OR CITY BOUND
		TRAVERSE OR TRIANGULATION STATION
		TROLLEY POLE OR GUY POLE
		TRANSMISSION POLE
		UTILITY POLE W/ FIREBOX
		UTILITY POLE WITH DOUBLE LIGHT
		UTILITY POLE W / 1 LIGHT
		UTILITY POLE
		BUSH
		TREE
		STUMP
		SWAMP / MARSH
		WATER GATE
		PARKING METER
		OVERHEAD CABLE/WIRE
		CURBING
		CONTOURS (ON-THE-GROUND SURVEY DATA)
		CONTOURS (PHOTOGRAMMETRIC DATA)
		UNDERGROUND DRAIN PIPE (DOUBLE LINE 24 INCH AND OVER)
		UNDERGROUND ELECTRIC DUCT (DOUBLE LINE 24 INCH AND OVER)
		UNDERGROUND GAS MAIN (DOUBLE LINE 24 INCH AND OVER)
		UNDERGROUND SEWER MAIN (DOUBLE LINE 24 INCH AND OVER)
		UNDERGROUND TELEPHONE DUCT (DOUBLE LINE 24 INCH AND OVER)
		UNDERGROUND WATER MAIN (DOUBLE LINE 24 INCH AND OVER)
		BALANCED STONE WALL
		GUARD RAIL - STEEL POSTS
		GUARD RAIL - WOOD POSTS
		GUARD RAIL - DOUBLE FACE - STEEL POSTS
		GUARD RAIL - DOUBLE FACE - WOOD POSTS
		CHAIN LINK OR METAL FENCE
		WOOD FENCE
		SEDIMENT BARRIER
		COIR LOG SEDIMENT BARRIER
		TREE LINE
		SAWCUT LINE
		TOP OR BOTTOM OF SLOPE
		LIMIT OF EDGE OF PAVEMENT OR COLD PLANE AND OVERLAY
		BANK OF RIVER OR STREAM
		BORDER OF WETLAND
		100 FT WETLAND BUFFER
		200 FT RIVERFRONT BUFFER
		STATE HIGHWAY LAYOUT
		TOWN OR CITY LAYOUT
		COUNTY LAYOUT
		RAILROAD SIDELINE
		TOWN OR CITY BOUNDARY LINE
		PROPERTY LINE OR APPROXIMATE PROPERTY LINE
		EASEMENT

TRAFFIC SYMBOLS

EXISTING	PROPOSED	DESCRIPTION
		CONTROLLER PHASE ACTUATED
		TRAFFIC SIGNAL HEAD (SIZE AS NOTED)
		WIRE LOOP DETECTOR (6' x 6' TYP UNLESS OTHERWISE SPECIFIED)
		VIDEO DETECTION CAMERA
		MICROWAVE DETECTOR
		PEDESTRIAN PUSH BUTTON, SIGN (DIRECTIONAL ARROW AS SHOWN) AND SADDLE
		EMERGENCY PREEMPTION CONFIRMATION STROBE LIGHT
		VEHICULAR SIGNAL HEAD
		VEHICULAR SIGNAL HEAD, OPTICALLY PROGRAMMED
		FLASHING BEACON
		PEDESTRIAN SIGNAL HEAD, (TYPE AS NOTED OR AS SPECIFIED)
		RAILROAD SIGNAL
		SIGNAL POST AND BASE (ALPHA-NUMERIC DESIGNATION NOTED)
		MAST ARM, SHAFT AND BASE (ARM LENGTH AS NOTED)
		HIGH MAST POLE OR TOWER
		SIGN AND POST
		SIGN AND POST (2 POSTS)
		MAST ARM WITH LUMINAIRE
		OPTICAL PRE-EMPTION DETECTOR
		CONTROL CABINET, GROUND MOUNTED
		CONTROL CABINET, POLE MOUNTED
		FLASHING BEACON CONTROL AND METER PEDESTAL
		LOAD CENTER ASSEMBLY
		PULL BOX 12"x12" (OR AS NOTED)
		ELECTRIC HANDHOLE 12"x24" (OR AS NOTED)
-----		TRAFFIC SIGNAL CONDUIT

PROJECT DESCRIPTION:

THIS PROJECT PROPOSES TO REPLACE THE EXISTING PLEASANT STREET BRIDGE (BRIDGE NO. D-08-002) OVER MUDDY COVE ADJACENT TO THE TAUNTON RIVER IN DIGHTON, MA. THE EXISTING STRUCTURE CONSISTS OF A SINGLE SPAN AND TWO 10'-6" WIDE TRAVEL LANES THAT ACCOMMODATE TWO-WAY TRAFFIC. THE PROJECT WILL PROVIDE A NEW BRIDGE WITH A 31-FOOT WIDE ROADWAY, CONSISTING OF TWO 11-FOOT TRAVEL LANES WITH A 2-FOOT SHOULDER ON EASTERN SIDE AND A 7-FOOT SHOULDER ON THE WESTERN SIDE. THE PROPOSED ROADWAY ALIGNMENT WILL BE MAINTAINED. A 6-FOOT WIDE SIDEWALK WILL BE INCLUDED ON THE EASTERN SIDE. FULL DEPTH RECONSTRUCTION WILL BE PROVIDED FOR THE APPROACH ROADWAYS FOR APPROXIMATELY 100 FEET FROM THE NORTH OF THE PROPOSED BRIDGE AND 150 FEET FROM THE SOUTH OF THE PROPOSED BRIDGE ALONG BOTH APPROACHES. A TEMPORARY ROADWAY CLOSURE WILL BE IMPLEMENTED TO CONSTRUCT THE BRIDGE. THE REQUIRED DETOUR WILL BE APPROXIMATELY 1 MILE LONG.

ABBREVIATIONS

GENERAL	
AADT	ANNUAL AVERAGE DAILY TRAFFIC
ABAN	ABANDON
ADJ	ADJUST
APPROX.	APPROXIMATE
A.C.	ASPHALT CONCRETE
ACCM PIPE	ASPHALT COATED CORRUGATED METAL PIPE
BIT.	BITUMINOUS
BC	BOTTOM OF CURB
BD.	BOUND
BL	BASELINE
BLDG	BUILDING
BM	BENCHMARK
BO	BY OTHERS
BOS	BOTTOM OF SLOPE
BR.	BRIDGE
CB	CATCH BASIN
CBCI	CATCH BASIN WITH CURB INLET
CC	CEMENT CONCRETE
CCM	CEMENT CONCRETE MASONRY
CEM	CEMENT
CI	CURB INLET
CIP	CAST IRON PIPE
CLF	CHAIN LINK FENCE
CL	CENTERLINE
CMP	CORRUGATED METAL PIPE
CSP	CORRUGATED STEEL PIPE
CO.	COUNTY
CONC	CONCRETE
CONT	CONTINUOUS
CONST	CONSTRUCTION
CR GR	CROWN GRADE
DHV	DESIGN HOURLY VOLUME
DI	DROP INLET
DIA	DIAMETER
DIP	DUCTILE IRON PIPE
DW	STEADY DON'T WALK - PORTLAND ORANGE
DWY	DRIVEWAY
ELEV (or EL.)	ELEVATION
EMB	EMBANKMENT
EOP	EDGE OF PAVEMENT
EXIST (or EX)	EXISTING
EXC	EXCAVATION
F&C	FRAME AND COVER
F&G	FRAME AND GRATE
FDN.	FOUNDATION
FLDSTN	FIELDSTONE
GAR	GARAGE
GD	GROUND
GG	GAS GATE
GI	GUTTER INLET
GIP	GALVANIZED IRON PIPE
GRAN	GRANITE
GRAV	GRAVEL
GRD	GUARD
HDW	HEADWALL
HMA	HOT MIX ASPHALT
HOR	HORIZONTAL
HYD	HYDRANT
INV	INVERT
JCT	JUNCTION
L	LENGTH OF CURVE
LB	LEACH BASIN
LP	LIGHT POLE
LT	LEFT
MAX	MAXIMUM
MB	MAILBOX
MH	MANHOLE
MHB	MASSACHUSETTS HIGHWAY BOUND
MIN	MINIMUM
M&O	MILL & OVERLAY
NIC	NOT IN CONTRACT
NO.	NUMBER
PC	POINT OF CURVATURE
PCC	POINT OF COMPOUND CURVATURE
PCR	PEDESTRIAN CURB RAMP
P.G.L.	PROFILE GRADE LINE
PI	POINT OF INTERSECTION
POC	POINT ON CURVE
POT	POINT ON TANGENT
PRC	POINT OF REVERSE CURVATURE
PROJ	PROJECT
PROP	PROPOSED
PSB	PLANTABLE SOIL BORROW
PT	POINT OF TANGENCY

DIGHTON  
PLEASANT STREET

STATE	FED. AID PROJ. NO.	SHEET NO.	TOTAL SHEETS
MA	----	2	9
PROJECT FILE NO.		613636	

PRELIMINARY RIGHT OF WAY  
LEGEND, ABBREVIATIONS AND  
PROJECT DESCRIPTION

ABBREVIATIONS (cont.)

GENERAL	
PVC	POINT OF VERTICAL CURVATURE
PVI	POINT OF VERTICAL INTERSECTION
PVT	POINT OF VERTICAL TANGENCY
PVMT	PAVEMENT
PWW	PAVED WATER WAY
R	RADIUS OF CURVATURE
R&D	REMOVE AND DISPOSE
RCP	REINFORCED CONCRETE PIPE
RD	ROAD
RDWY	ROADWAY
REM	REMOVE
RET	RETAIN
RET WALL	RETAINING WALL
ROW	RIGHT OF WAY
RR	RAILROAD
R&R	REMOVE AND RESET
R&S	REMOVE AND STACK
RT	RIGHT
SB	STONE BOUND
SHLD	SHOULDER
SMH	SEWER MANHOLE
ST	STREET
STA	STATION
SSD	STOPPING SIGHT DISTANCE
SHLO	STATE HIGHWAY LAYOUT LINE
SW	SIDEWALK
T	TANGENT DISTANCE OF CURVE/TRUCK %
TAN	TANGENT
TEMP	TEMPORARY
TC	TOP OF CURB
TOS	TOP OF SLOPE
TYP	TYPICAL
UP	UTILITY POLE
VAR	VARIES
VERT	VERTICAL
VC	VERTICAL CURVE
WG	WATER GATE
WIP	WROUGHT IRON PIPE
WM	WATER METER/WATER MAIN
X-SECT	CROSS SECTION

TRAFFIC SIGNAL ABBREVIATIONS

CAB	CABINET
CCVE	CLOSED CIRCUIT VIDEO EQUIPMENT
DW	STEADY UPRAISED HAND
FDW	FLASHING UPRAISED HAND
FR	FLASHING CIRCULAR RED
FRL	FLASHING RED LEFT ARROW
FRR	FLASHING RED RIGHT ARROW
FY	FLASHING CIRCULAR YELLOW
FYL	FLASHING YELLOW LEFT ARROW
FYR	FLASHING YELLOW RIGHT ARROW
G	STEADY CIRCULAR GREEN
GL	STEADY GREEN LEFT ARROW
GR	STEADY GREEN RIGHT ARROW
GSL	STEADY GREEN SLASH LEFT ARROW
GSR	STEADY GREEN SLASH RIGHT ARROW
GV	STEADY GREEN VERTICAL ARROW
OL	OVERLAP
PED	PEDESTRIAN
PTZ	PAN, TILT, ZOOM
R	STEADY CIRCULAR RED
RL	STEADY RED LEFT ARROW
RR	STEADY RED RIGHT ARROW
TR SIG	TRAFFIC SIGNAL
TSC	TRAFFIC SIGNAL CONDUIT
W	STEADY WALKING PERSON
Y	STEADY CIRCULAR YELLOW
YL	STEADY YELLOW LEFT ARROW



William Tirrell

4/22/2025

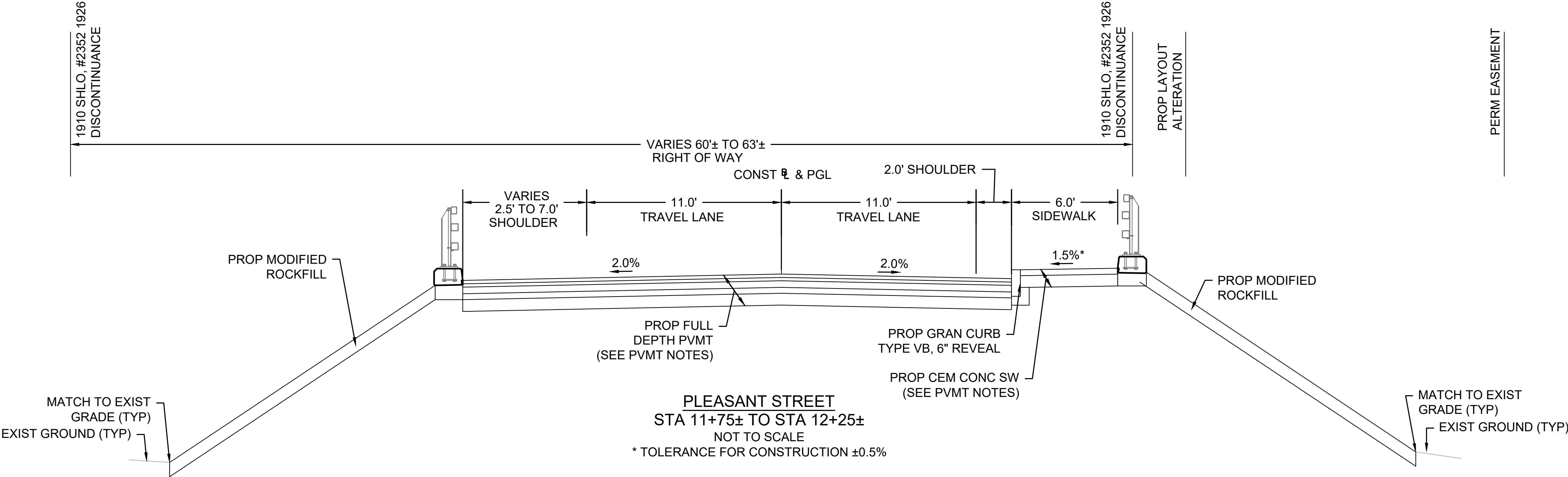
613636 RW(TYPICAL SECTIONS).DWG Plotted on 16-Apr-2025 8:12 AM



MassDOT DWT Name: MassDOT\_ROW Sheet  
MassDOT DWT Version: v2023  
MassDOT CAD Standard Release: r5.1  
Release Date: September 2023

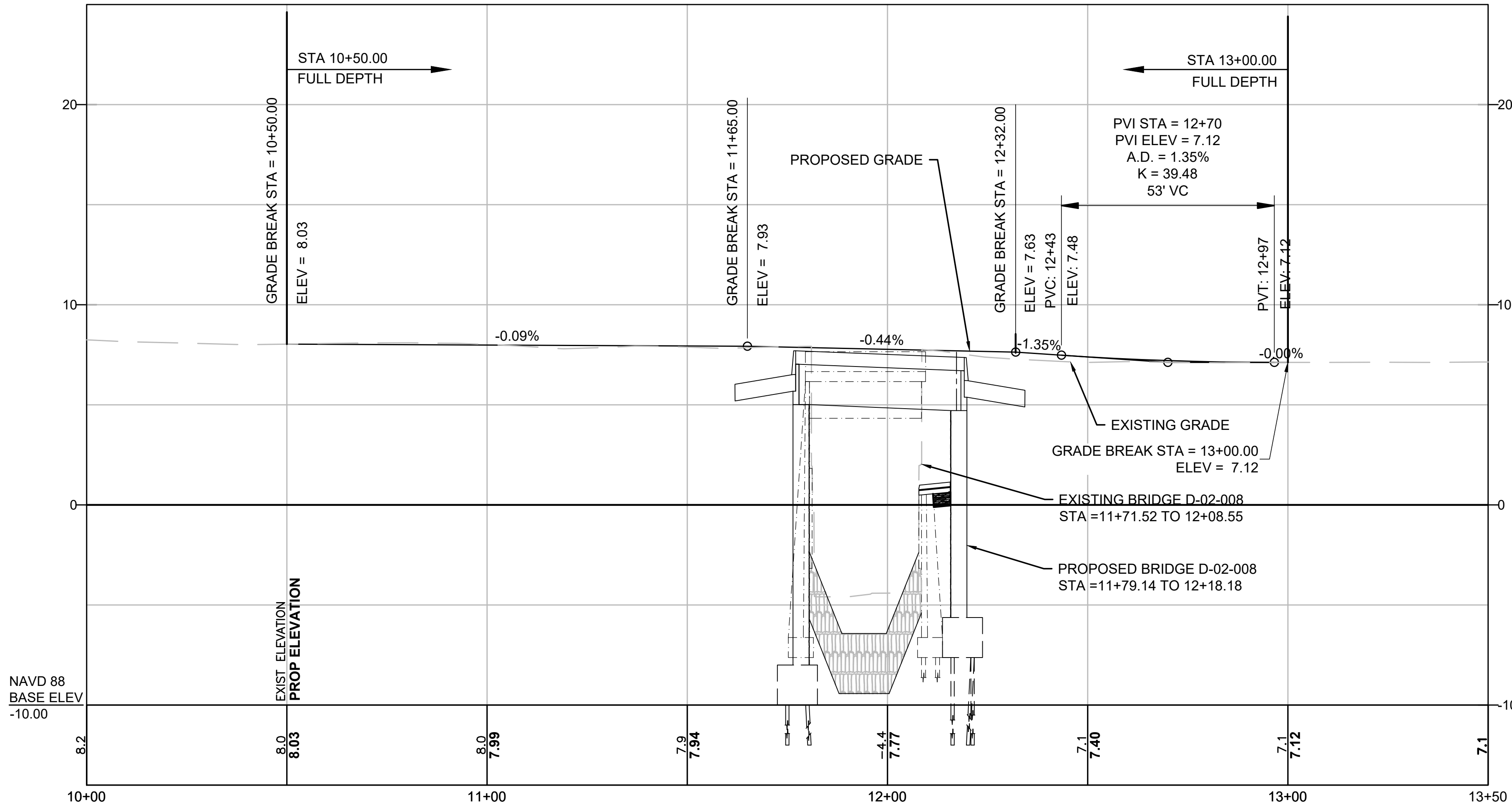
DIGHTON PLEASANT STREET			
STATE	FED. AID PROJ. NO.	SHEET NO.	TOTAL SHEETS
MA	----	4	9
PROJECT FILE NO.		613636	

PRELIMINARY RIGHT OF WAY  
TYPICAL SECTIONS  
SHEET 2 OF 2

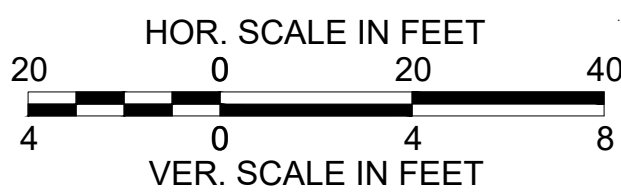


William Tirrell  
4/22/2025

PLEASANT STREET



William Tirrell  
4/22/2025



PROJECT TOTALS			
AFFECTED PROPERTIES	FEE TAKINGS	PERMANENT EASEMENTS	TEMPORARY EASEMENTS
7	4	8	7



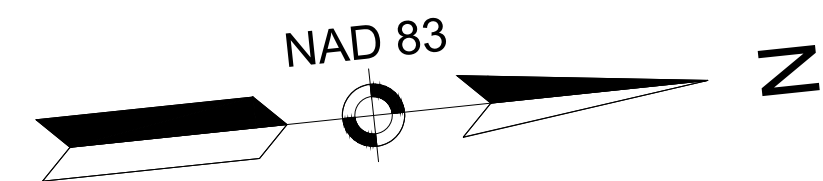
William Tirrell  
4/22/2025

DIGHTON PLEASANT STREET			
STATE	FED. AID PROJ. NO.	SHEET NO.	TOTAL SHEETS
MA	----	6	9
PROJECT FILE NO.		613636	
PRELIMINARY RIGHT OF WAY PARCEL SUMMARY			

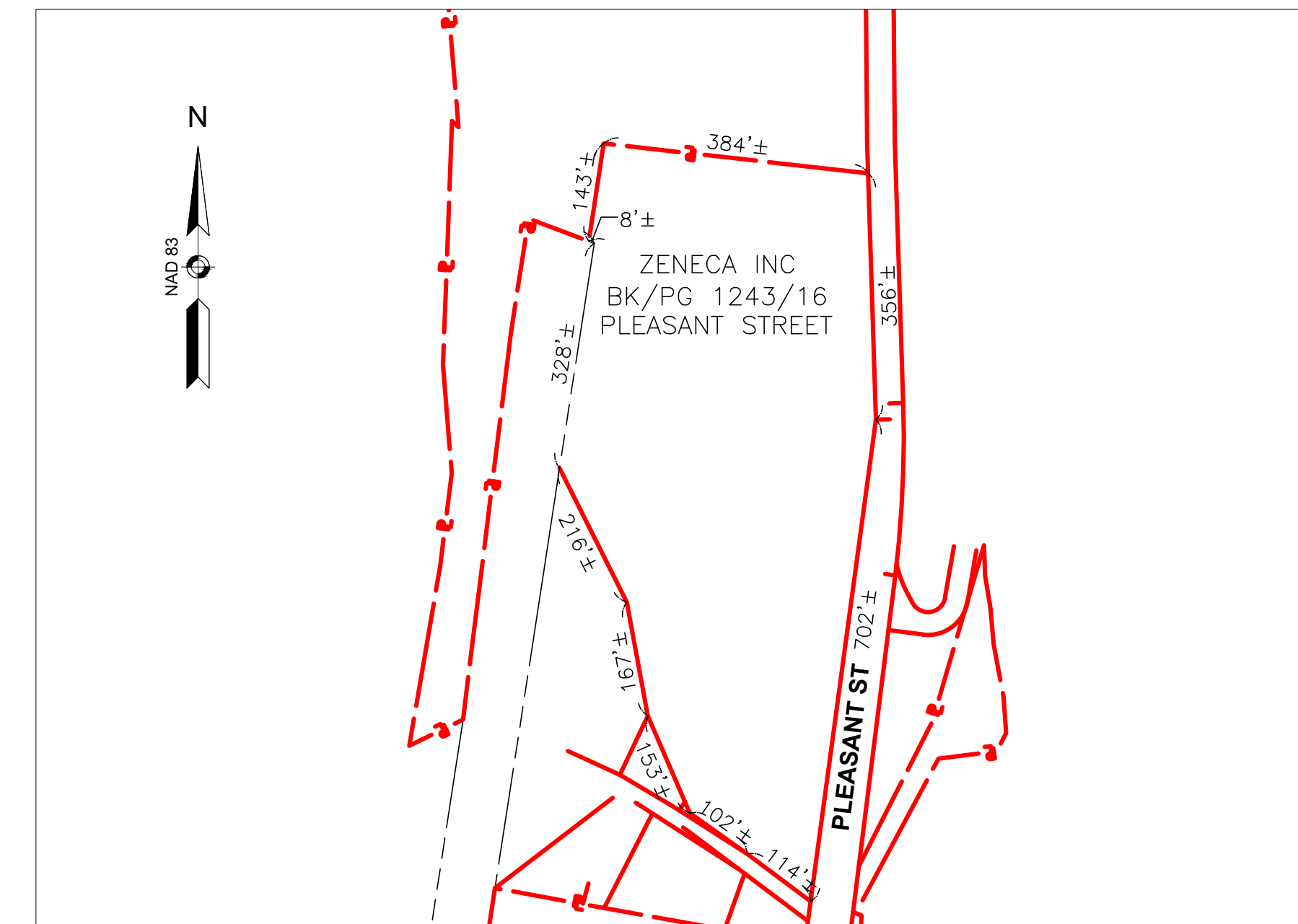
PARCEL NO.	PLAN SHEET NO.	TITLEHOLDER	TITLE REFERENCE				ROW PARCEL		PROPERTY TOTALS (S.F.)			FRONTAGE ON ROW PLAN (FT.)	PROPERTY ADDRESS	ZONING DISTRICT	REMARKS	LAND RESTRICTION FROM THE DEED
			DEED BOOK	DEED PAGE	LCC NO.	CERT NO.	INTEREST ACQUIRED	AREA (S.F. +/-)	TOTAL TAKEN	REMAINING	TOTAL PROPERTY AREA (RECORD)					
TE-1	8	WILLIAM R. & MARGUERITE KANE	9490	75			TEMP	367				96	PLEASANT STREET	R	GRADING (MAX 2:1), LOAM AND SEED, COIR LOG SEDIMENT BARRIER, TEMPORARY FENCE	
1-T	8	THOMAS CARTIN TRUSTEE	21204	234			FEE	240	240	4,116	4,356*	148	MUDDY COVE LANE	R	BRIDGE CONSTRUCTION, PEDESTRIAN CURB RAMP, SIDEWALK, GUARDRAIL	
S-1	8	THOMAS CARTIN TRUSTEE	21204	234			PERM	570							MODIFIED ROCKFILL (MAX 1.5:1), COIR LOG SEDIMENT BARRIER	
TE-2	8	THOMAS CARTIN TRUSTEE	21204	234			TEMP	22							GRADING (MAX 2:1), LOAM AND SEED, COIR LOG SEDIMENT BARRIER, TEMPORARY FENCE	
TE-3	8	THOMAS CARTIN TRUSTEE	21204	234			TEMP	11							GRADING (MAX 2:1), LOAM AND SEED, TEMPORARY FENCE	
2-T	8	OWNER UNKNOWN					FEE	40				10	UNKNOWN		BRIDGE CONSTRUCTION, SIDEWALK, GUARDRAIL	
S-2	8	OWNER UNKNOWN					PERM	669							MODIFIED ROCKFILL (MAX 1.5:1), COIR LOG SEDIMENT BARRIER	
3-T	8	TOWN OF DIGHTON	19498	268			FEE	105	105	21,675	21,780*	57	PLEASANT STREET	E	BRIDGE CONSTRUCTION, SIDEWALK, GUARDRAIL	ARTICLE 97
GR-1	8	TOWN OF DIGHTON	19498	268			PERM	68							GUARDRAIL	
GR-S-1	8	TOWN OF DIGHTON	19498	268			PERM	77							GUARDRAIL, MODIFIED ROCKFILL (MAX 1.5:1)	
S-3	8	TOWN OF DIGHTON	19498	268			PERM	468							MODIFIED ROCKFILL (MAX 1.5:1), COIR LOG SEDIMENT BARRIER	
TE-4	8	TOWN OF DIGHTON	19498	268			TEMP	140							GRADING (MAX 2:1), LOAM AND SEED, COIR LOG SEDIMENT BARRIER	
PUE-1	8	TOWN OF DIGHTON	1010	101			PERM	73			21,780*	343	PLEASANT STREET	E	UTILITY POLE, GUY WIRE, TREE PROTECTION	ARTICLE 97
GR-2	8	TOWN OF DIGHTON	1010	101			PERM	39							GUARDRAIL	
TE-5	8	TOWN OF DIGHTON	1010	101			TEMP	261							GRADING (MAX 2:1), LOAM AND SEED, COIR LOG SEDIMENT BARRIER, REM BOULDER	
4-T	8	THOMAS & MARGORIE E. CARTIN			LCP#24257A		FEE	830	830	47,086	47,916*	261	2288 PLEASANT STREET	R	FULL DEPTH PAVEMENT WITHIN EXISTING ROADWAY LIMITS	
TE-6	8	THOMAS & MARGORIE E. CARTIN					TEMP	63							GRADING (MAX 4:1), LOAM AND SEED, PROP HMA DWY	
TE-7	8	THOMAS & MARGORIE E. CARTIN					TEMP	321							GRADING (MAX 2:1), LOAM AND SEED, TREE PROTECTION	
PUE-2	8	ZENECA INC	1243	16			PERM	709			252,648*	1,172	PLEASANT STREET	C	OVERHEAD UTILITIES	

\* Total area derived from assessed area on the property record card

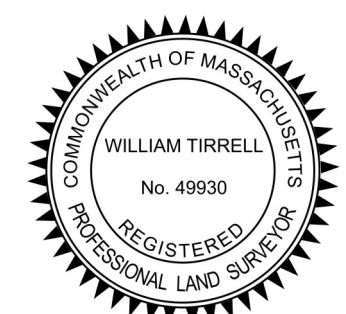
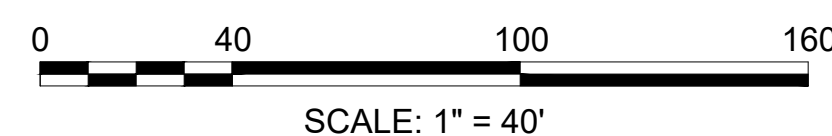
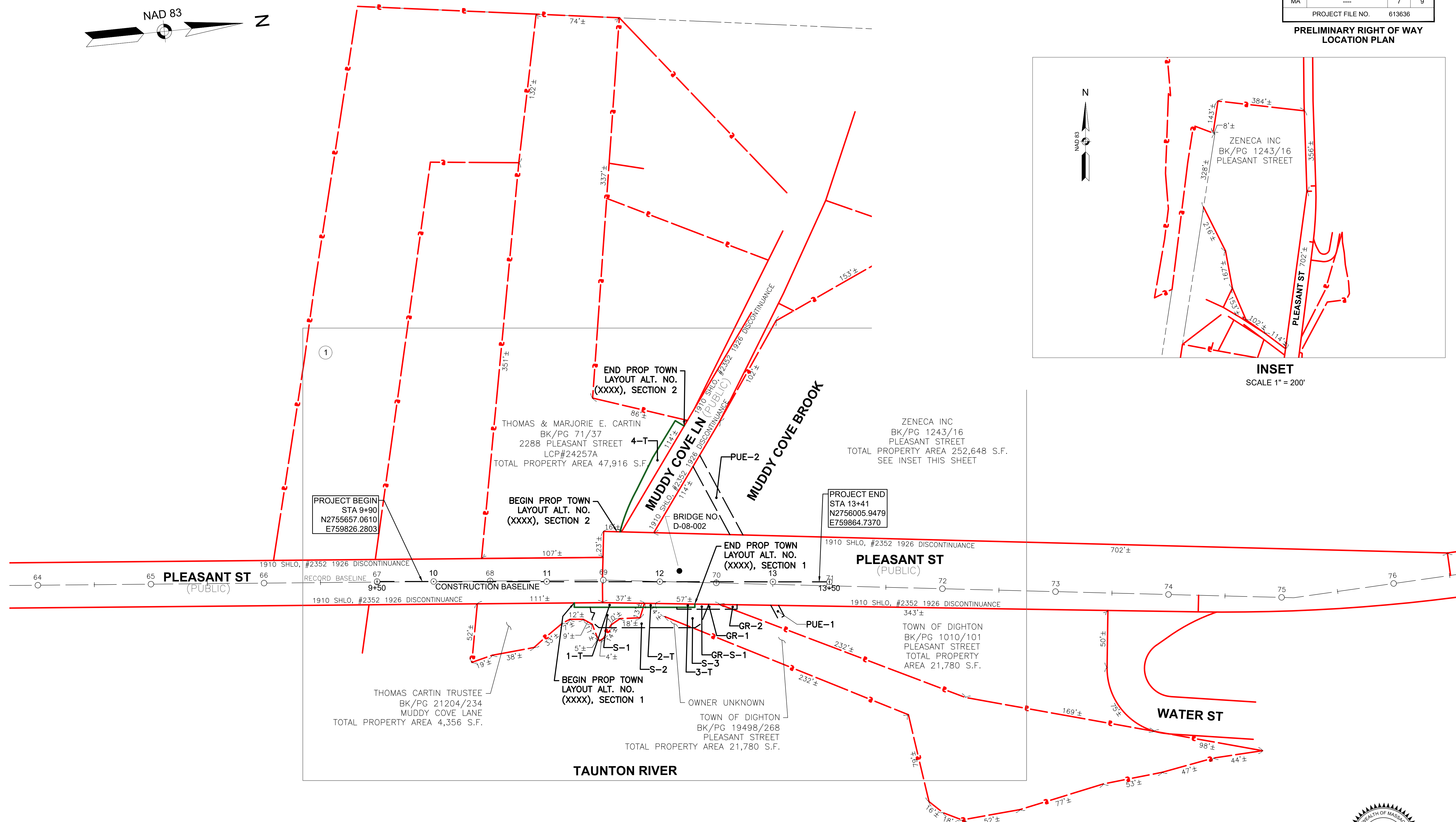




DIGHTON PLEASANT STREET			
STATE	FED. AID PROJ. NO.	SHEET NO.	TOTAL SHEETS
MA	----	7	9
PROJECT FILE NO.		613636	
PRELIMINARY RIGHT OF WAY LOCATION PLAN			



INSET  
SCALE 1" = 200'



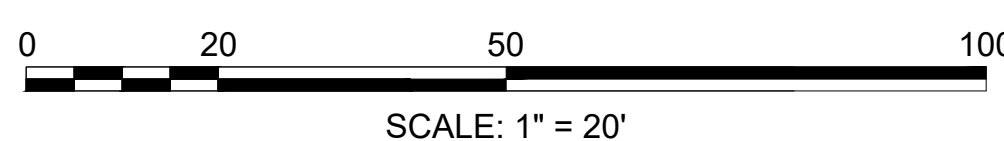
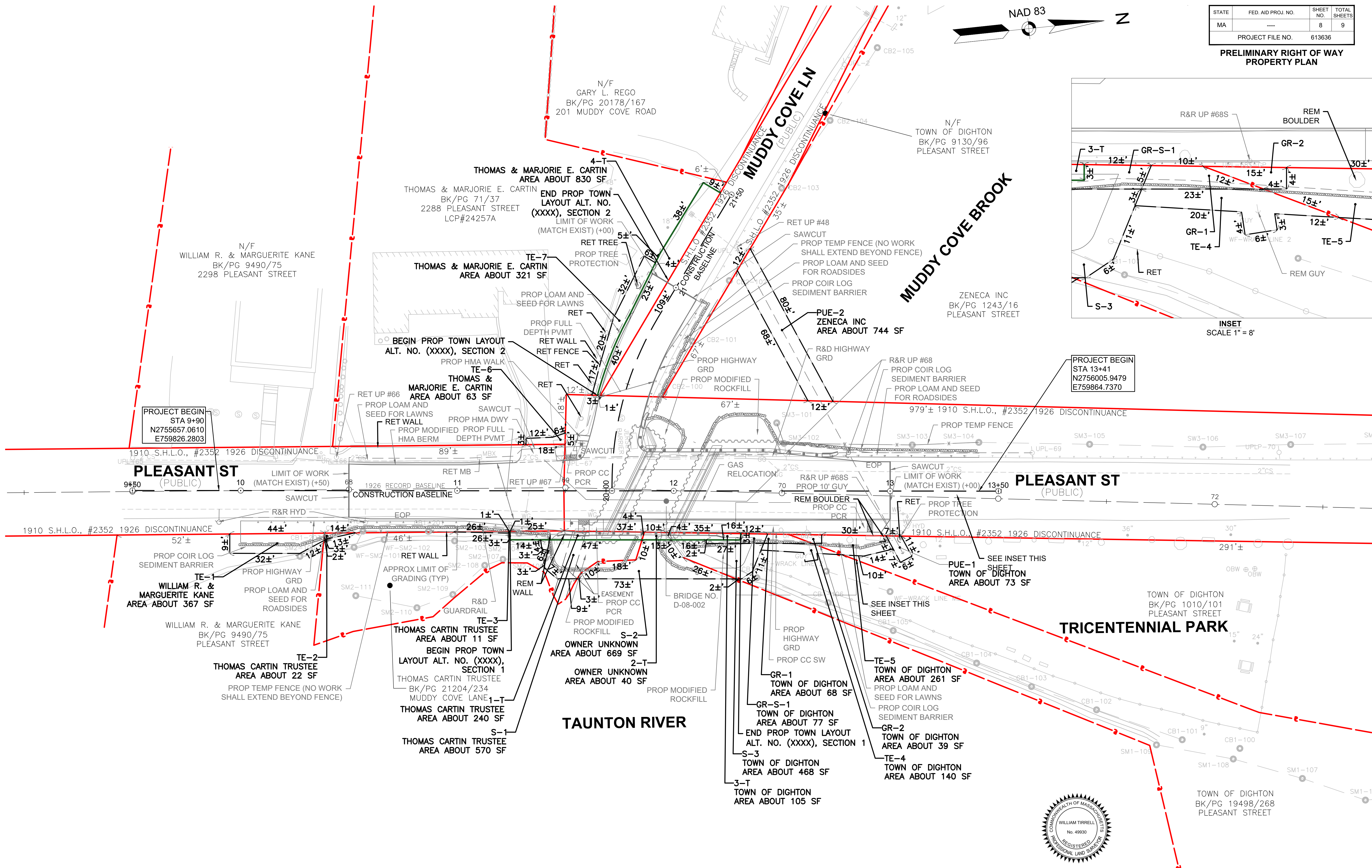
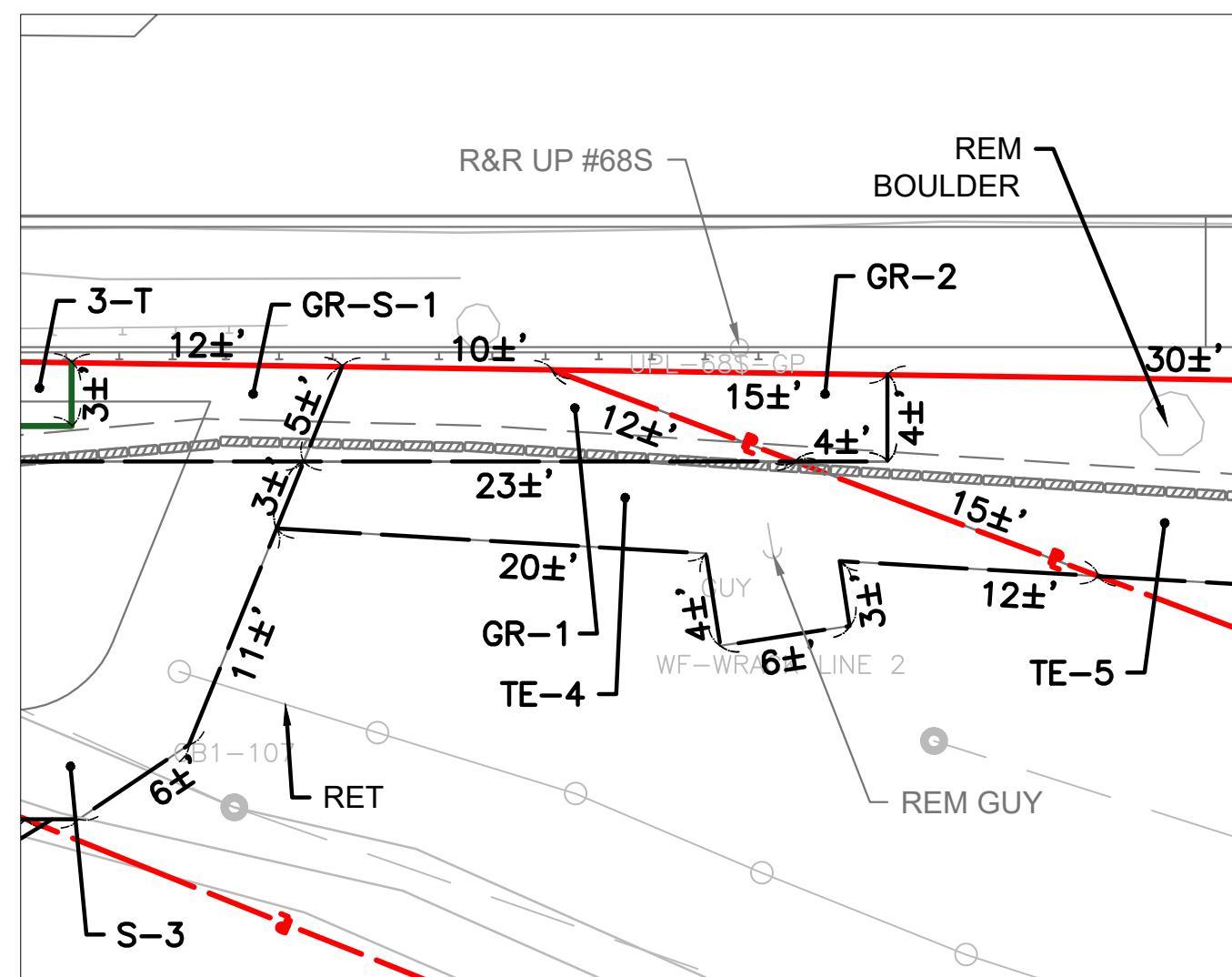
William Tirrell  
4/22/2025



DIGHTON  
PLEASANT STREET

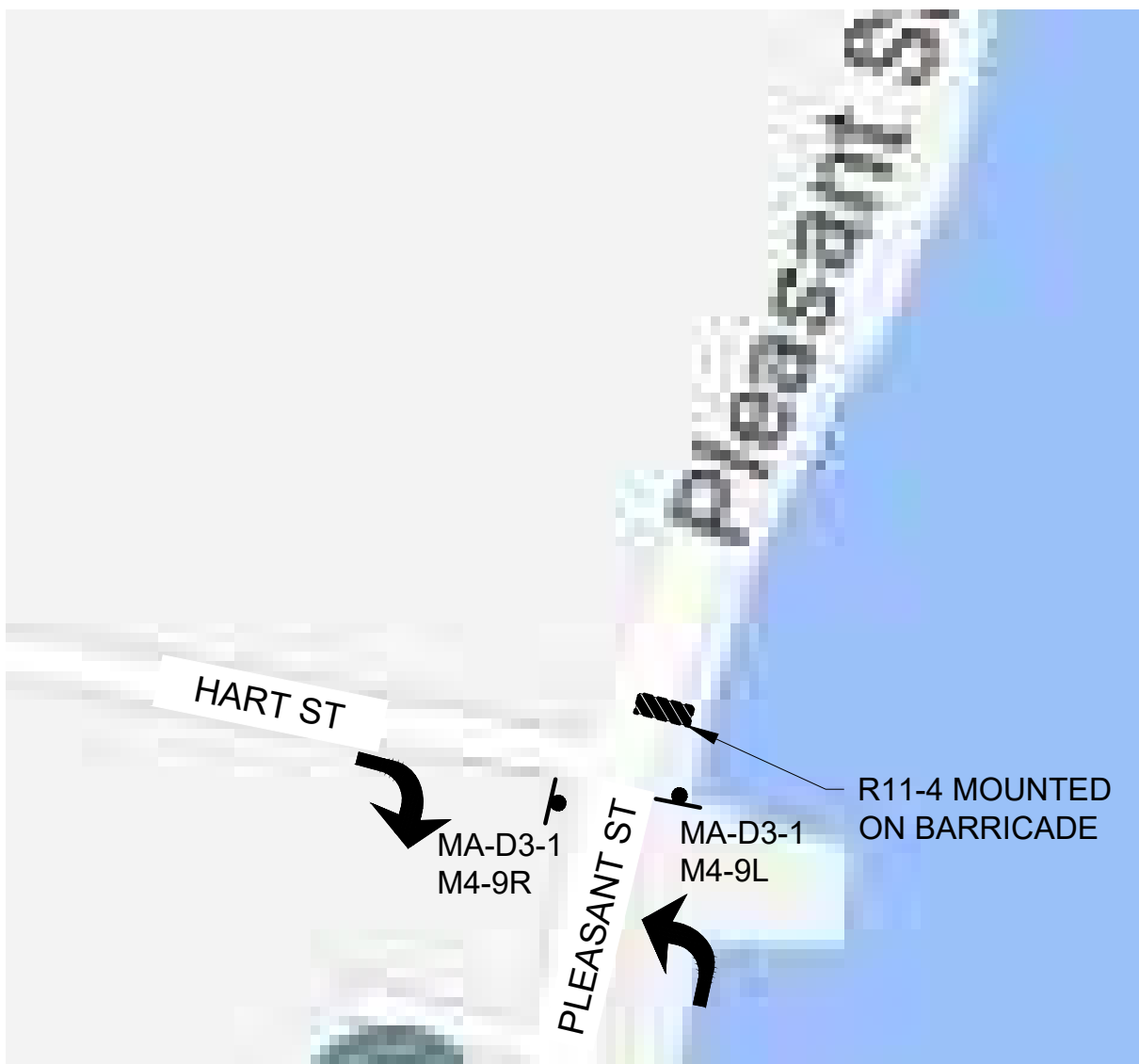
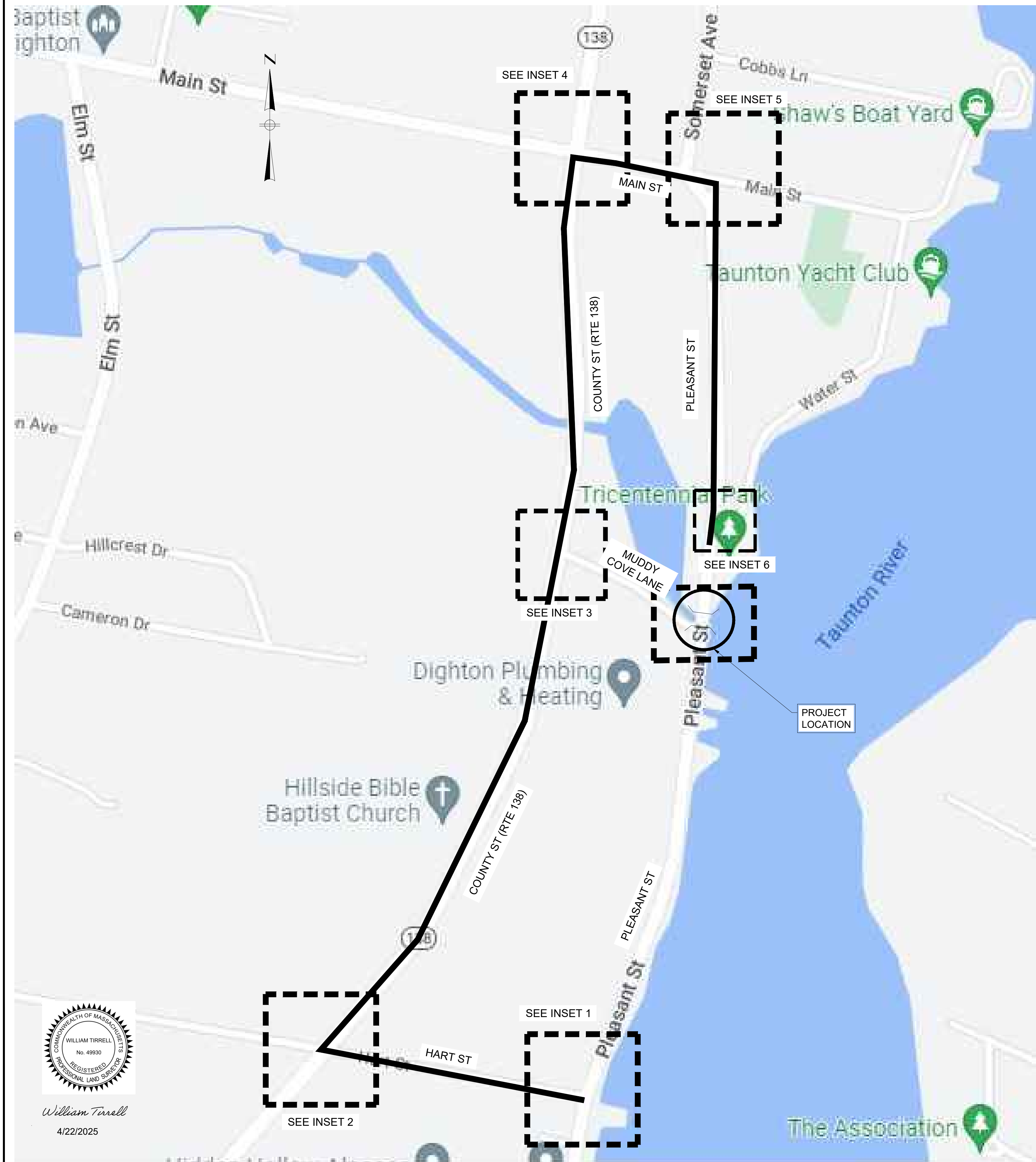
STATE	FED. AID PROJ. NO.	SHEET NO.	TOTAL SHEETS
MA	----	8	9
PROJECT FILE NO.		613636	

PRELIMINARY RIGHT OF WAY  
PROPERTY PLAN



William Tirrell  
4/22/2025





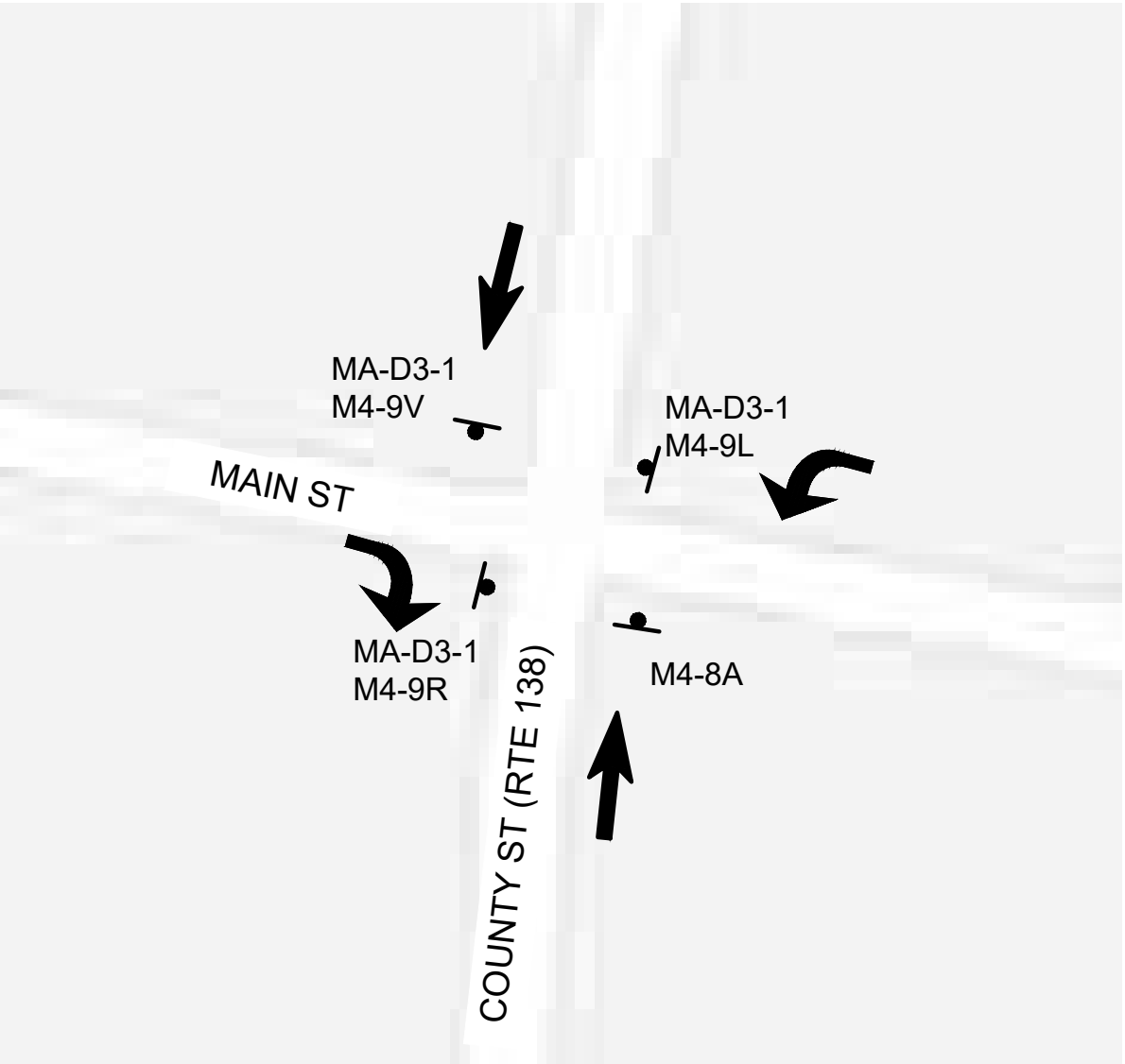
INSET 1  
NOT TO SCALE



INSET 2  
NOT TO SCALE



INSET 3  
NOT TO SCALE



INSET 4  
NOT TO SCALE



INSET 5  
NOT TO SCALE



INSET 6  
NOT TO SCALE

- NOTES:
- EMERGENCY ACCESS MUST BE MAINTAINED TO ALL PROPERTIES AT ALL TIMES.
  - DETOUR SIGNS SHALL BE COVERED WHEN DETOUR IS NOT IN ACTIVE USE.